



RADIAL PISTON PUMPS

Model : 11R****

Ref. No. D 09190
Release 10 / 2018

ENGINEERING - 1 of 2

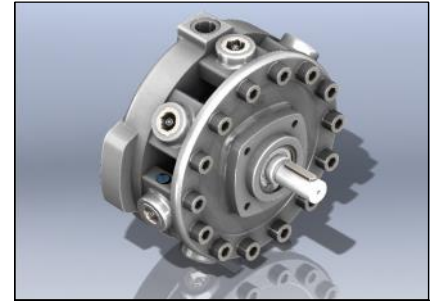
A Polyhydron Group Company

Description

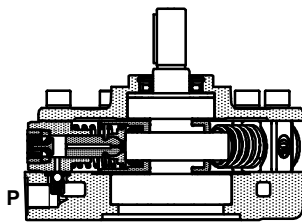
Model **11R****** are rugged oil immersed type Radial Piston Pumps and have either 5 or 7 pumping elements. These pumps are valve controlled and there is no restriction on direction of rotation of the pump.

They are available with 6 displacements and 3 pressure ratings.
These pumps give fixed output per revolution of the shaft.

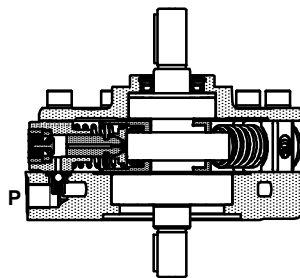
The pumps with model **11RE***** have extension shaft for through drive and are available with extension bracket assembly for coupling a low pressure pump having standard flanges as per ISO 3019/2 (Ref. datasheet no. D 09090).



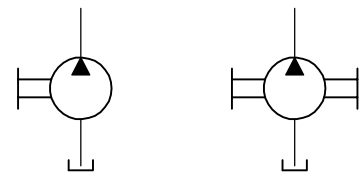
Section



Model : 11R***



Model : 11RE***



Model : 11R*** Model : 11RE***

Hydraulic symbol

Technical specifications

Designation	:	11R is a basic Radial piston pump. 11RE is a Radial piston pump with extension shaft.
Design	:	Radial piston, valve controlled, open execution.
No. of pumping elements	:	5 or 7.
Mounting	:	Oil immersed, face mounting.
Interface	:	Factory standard.
Direction of rotation	:	11R - No restriction on directions of rotation. 11RE - Depends upon the direction rotation of pump attached.
Connection	:	Suction port - Sucks oil directly from tank, no suction port is provided. Delivery (port P) - G1/2 female.
Speed range	:	300 to 2000 r/min.
Flow and Pressure	:	Refer Table no.1
Torque limitations	:	Input drive shaft - 220 Nm Extension shaft - 130 Nm
Hydraulic medium	:	Mineral oil.
Temperature range	:	-20°C to + 80°C.
Viscosity range	:	10 cSt to 380 cSt.
Fluid cleanliness required	:	ISO 4406 20/18/15 or better.
Mass	:	Model : 11R5 11RE5 11R7 11RE7 Kg : 18.5 18.8 19.7 19.9

Performance table no. 1

No. of pumping elements	Element type	Geometrical displacement in cm ³ /r	Pump output in l/min At 1450 r/min	Maximum Operating pressure in bar	Pressure in bar							
					50	100	150	200	250	300	350	400
5	A	7.70	10.5	400	0.87	1.75	2.62	3.50	4.37	5.25	5.51	6.99
					1.22	2.45	3.67	4.90	6.12	7.34	7.71	9.79
5	B	10.05	13.7	315	1.14	2.28	3.43	4.57	5.71	6.85	7.19	
					1.60	3.20	4.80	6.39	7.99	9.59	10.07	
5	C	12.72	17.3	250	1.45	2.89	4.34	5.78	7.23	1kW = 1.3410 hp		
					2.02	4.05	6.07	8.09	10.12			
7		17.81	24.3									

Note : Torque limitation : The total sum of torque applied to drive the pump and the pump attached (In case model 11RE is used), at any given instance, should not exceed 220 Nm.

polyhydron pvt. ltd.

78-80, Machhe Industrial Estate,
Machhe, Belgaum - 590 014. INDIA.

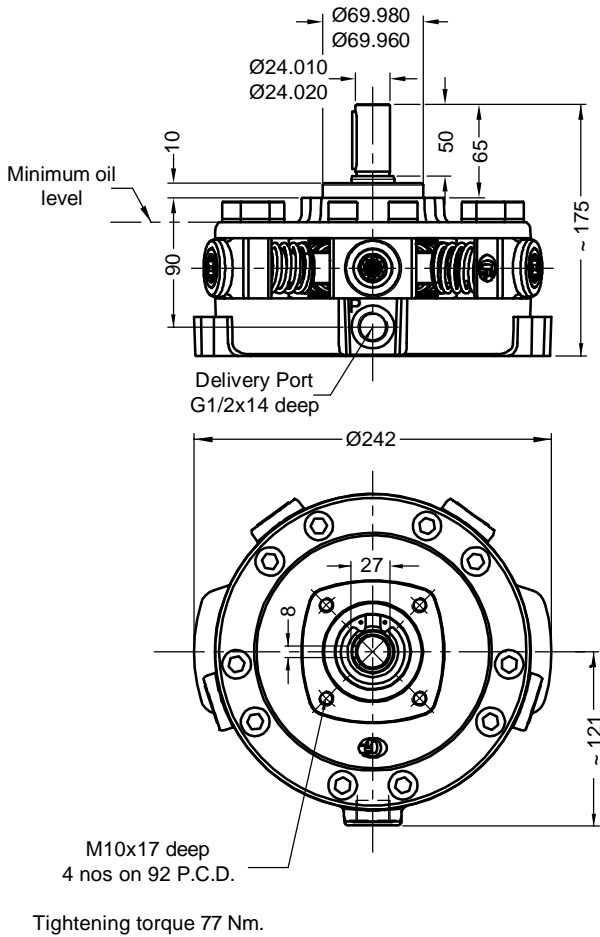
Phone : +91-(0)831- 2411001
Fax : +91-(0)831- 2411002
E-mail : polyhydron@gmail.com
Website : www.polyhydron.com



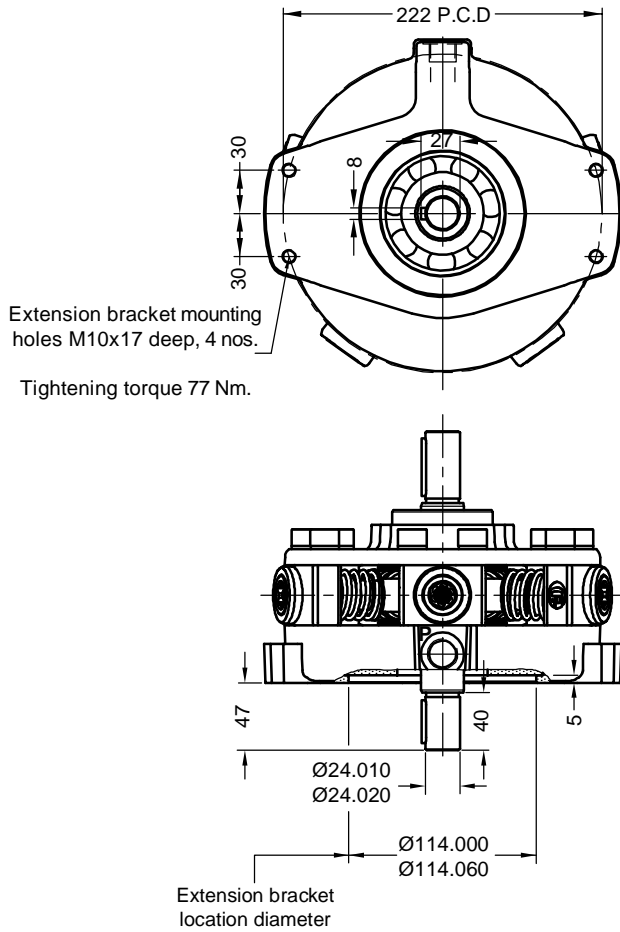
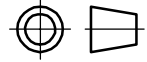
Unit dimensions

Pump without extension shaft
Model - 11R5 OR 11R7

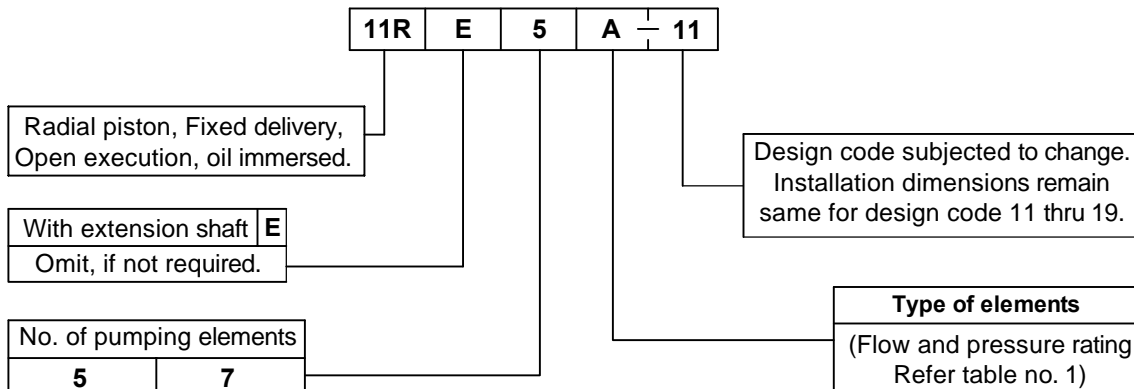
Dimensions in mm.



Pump with extension shaft
Model - 11RE5 OR 11RE7



Ordering code



Note : For Bell housing refer Data sheet no. D 09035 and For extension bracket refer Data sheet no. D 09090.

All rights reserved.
Subject to change without prior notice.
Due to continuous improvement in the design of the product, the actual product supplied may look different than shown above.
For critical applications, please ask for certified installation drawing.