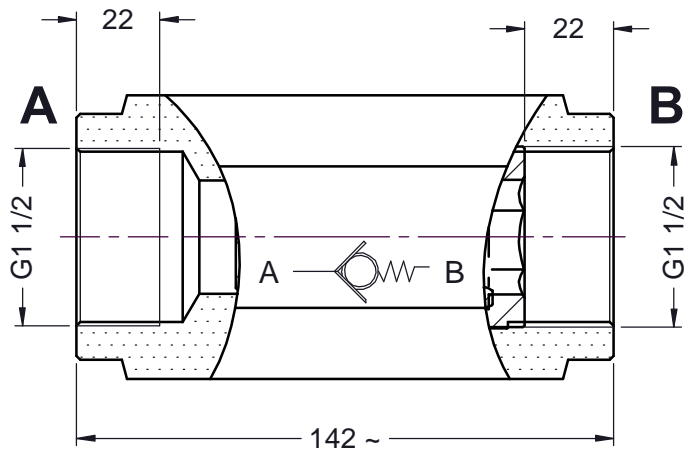


Technical specifications:

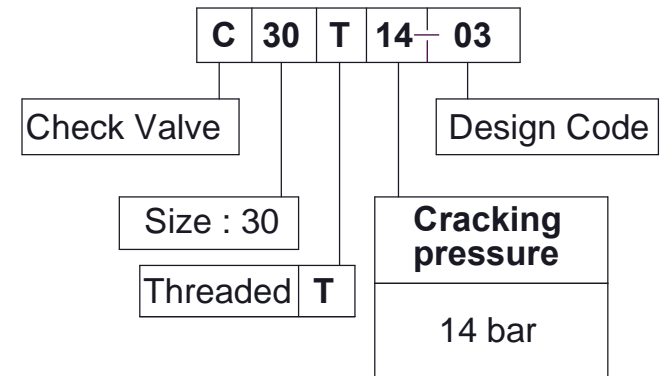
Construction	: Seat type valve.
Mounting style	: Threaded port
Mounting interface	: Factory standard.
Flow direction	: Free flow from A to B, Leakfree closure in opposite direction.
Cracking pressure	: 14 bar.
Working pressure	: 315 bar for Ports A and B .
Hydraulic medium	: Mineral oil.
Temperature range	: -20°C to + 80°C.
Viscosity range	: 10 cSt to 380 cSt.
Fluid cleanliness required	: ISO 4406 20/18/15 or better.
Max. flow handling capacity	: 280 l/min
Mass approx.	: 7.2 Kg



HYDRAULIC SYMBOL



ORDERING CODE.



polyhydron pvt. ltd.

BELGAUM 590 014, INDIA 0831 2411001

Scale: 1:2



Inline Check valve
Threaded
Size-30
Installation drawing