



A Polyhydron Group Company

CARTRIDGE VALVE COVER WITH PILOT OPTD. CHECK VALVE AND WITH OPTION OF STROKE LIMITER Model : CVC*PC*

Ref. No. D 09809
Release 05 / 2015

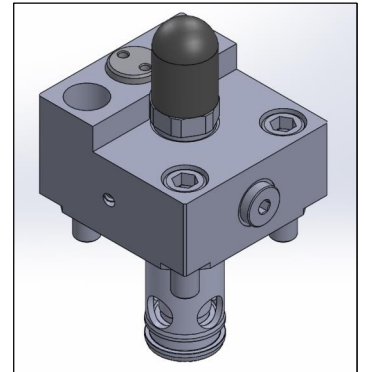
ENGINEERING - 1 of 2

Description

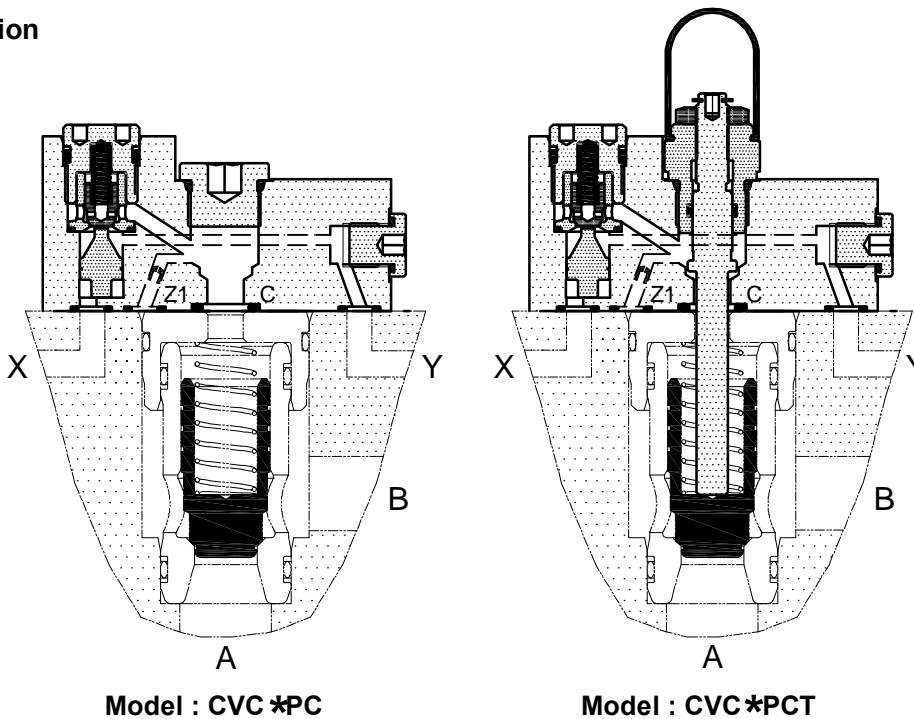
The Covers with model **CVC*PC*** are designed to hold polyhydron make Cartridge valves model **CV***** in cavities machined as per ISO 7368 , and provide facility to use the cartridge valve as a leakage free pilot operated check valve, when its pilot port **Z1** is connected to port **B** of the cartridge. In this condition, the combination allow free flow from its port **A** to port **B** and free reverse flow from port **B** to port **A** when its pilot port **X** is pressurised.

In addition, flow passing through the cartridge , as an optional feature, can be controlled by controlling the opening of the poppet by means of a Stroke limiter screw provided on the cover. The throttling is effective in either directions.

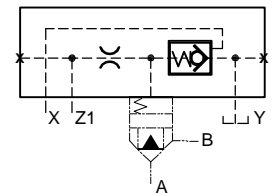
These Stroke limiters are more effective with cartridges having poppet with cushion nose.



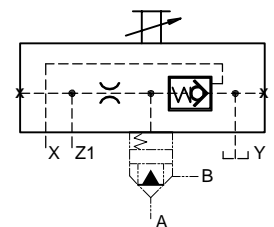
Section



Hydraulic symbol



Model : CVC*PC



Model : CVC*PCT

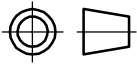
Technical specifications

Mounting interface	:	As per ISO 7368
Working pressure	:	350 bar.
Hydraulic medium	:	Mineral oil.
Temperature range	:	-20 to + 80°C.
Viscosity range	:	10 cSt to 380 cSt.
Fluid cleanliness required	:	ISO 4406 20/18/15 or better.
Check valve Area ratios	:	Pilot piston : poppet seat = 2.6 : 1.

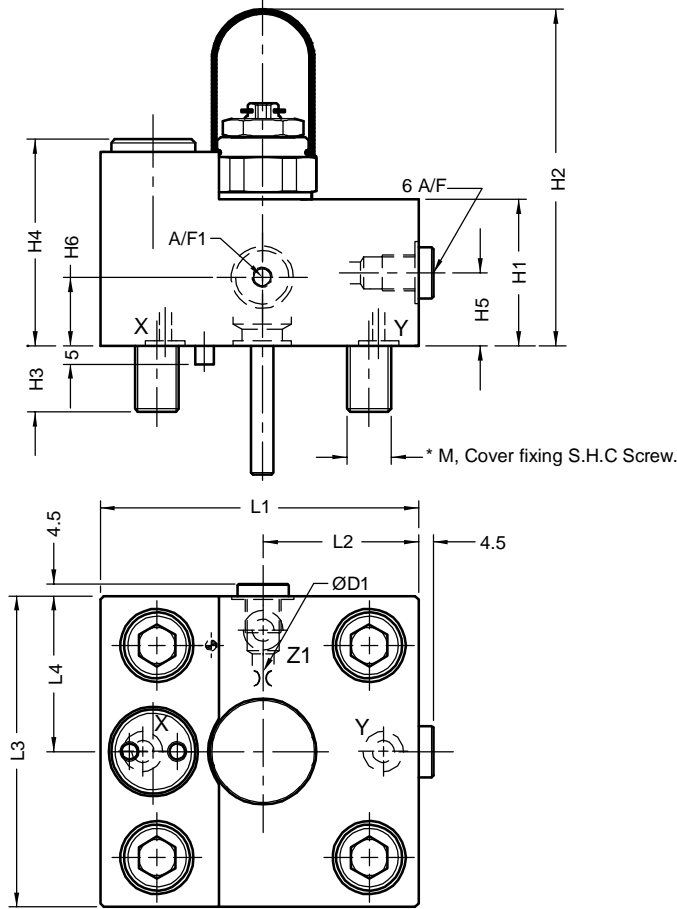


Unit dimensions

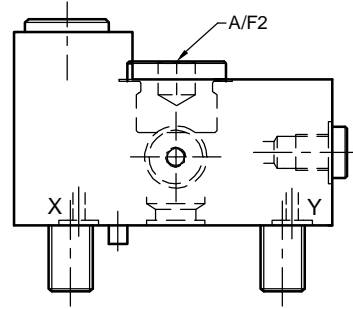
Dimensions in mm.



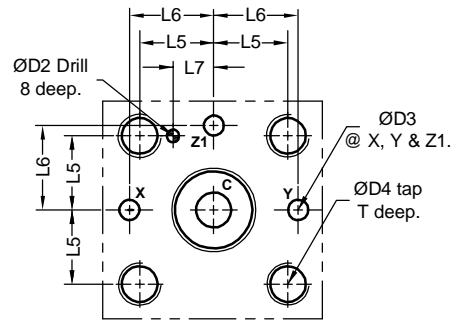
Model : CVC *PCT



Model : CVC *PC



Cover mounting interface as per ISO 7368.



Note:

1. Mounting interface for cover as per ISO 7368.
2. Cover fixing S.H.C Screws are **OUT OF SCOPE OF SUPPLY.**

Size	Mass Kg. apprx	L1	L2	L3	L4	L5	L6	L7	H1	H2	H3	H4	H5	H6	A/F1	A/F2	ØD1	ØD2	ØD3	ØD4	T	*M. 4 nos. Cover fixing S.H.C. Screw (Class 12.9)	Tightening Torque.
16	1.8	80	32.5	65	32.5	23	25	10.5	35	87	12	56.5	20	14.5	5	10	0.8	4	4	M8	14	M8 x 40 Long	39 Nm
25	2.8	87	42.5	85	42.5	29	33	16	40	92	18	56.5	20	20	6	10	0.8	6	6	M12	20	M12 x 45 Long	135 Nm
32	4.5	102	51	102	51	35	41	17	53	116	24	56.5	20	20	6	17	1.2	6	8	M16	26	M16 x 55 Long	330 Nm
40	7.5	125	62.5	125	62.5	42.5	50	23	60	126	30	63.5	27	25	6	17	1.2	6	10	M20	33	M20 x 70 Long	650 Nm

Ordering code

