



THROTTLE / CHECK VALVE MODULAR CONSTRUCTION

Model : TCM 10 *

Ref. No. D 04546

Release 06 / 2016

ENGINEERING - 1 of 2

A Polyhydron Group Company

Description

Throttle check valves model **TCM 10** are meant for controlling flow in one direction in circuit by simple throttling of flow. Reverse flow is free and is independent of throttle condition in opposite direction in same path. The valve is available with throttle check valve facility on either A port, B port or A and B ports.

These are non-pressure compensated flow control valves and therefore offer constant flow for a given setting, only if the pressure drop across the throttled passage is constant.

The valve can be converted from meter-in condition to meter-out condition by simply rotating the body along its longitudinal axis by 180 degree, while being installed.

Rotation of the throttling screw in clockwise direction, increase the pressure drop in the path.

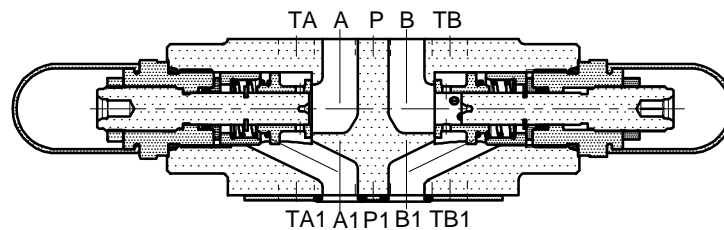
For locking the setting, a check nut is provided.

For protection of the setting, a protective cap is provided.

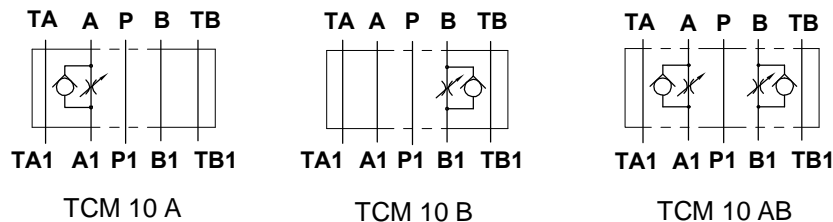


Section

TCM 10 AB



Hydraulic symbol



Technical specifications

Construction	:	Modular, spool type, Non-pressure compensated.
Mounting	:	Modular type, Conforming to 4401 - 05 - 04 - 0 - 94.
Mounting Position	:	Optional.
Direction of flow	:	For ports P, TA & TB free flow in either direction. For ports A & B refer Hydraulic symbols.
Nominal flow handling capacity	:	100 l/min.
Operating Pressure	:	315 bar.
Viscosity range	:	10 cSt to 380 cSt.
Fluid temperature range	:	-10°C to +80°C.
Fluid cleanliness required	:	ISO 4406 20/18/15 or better.

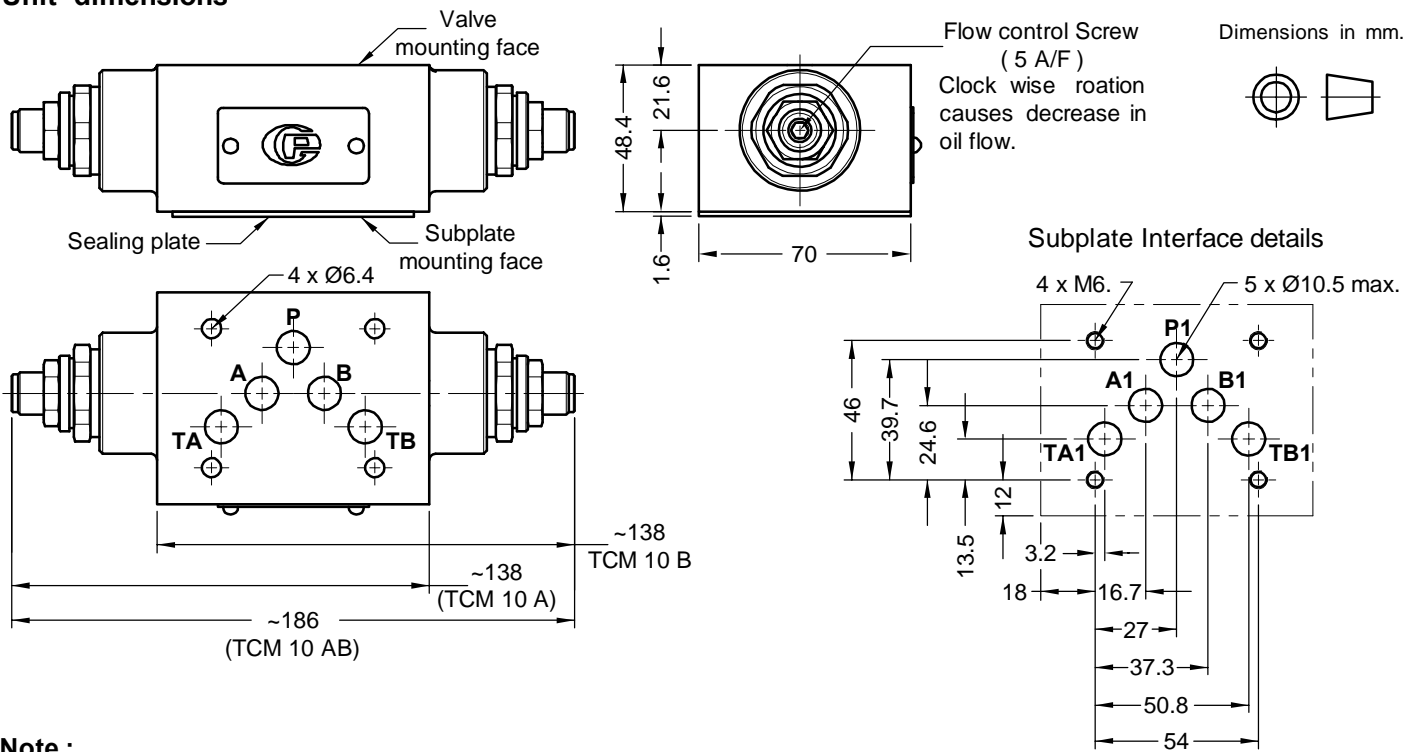
polyhydron pvt. ltd.

78-80, Machhe Industrial Estate,
Machhe, Belgaum - 590 014. INDIA.

Phone : +91-(0)831- 2411001
Fax : +91-(0)831- 2411002
E-mail : polyhydron@gmail.com
Website : www.polyhydron.com



Unit dimensions

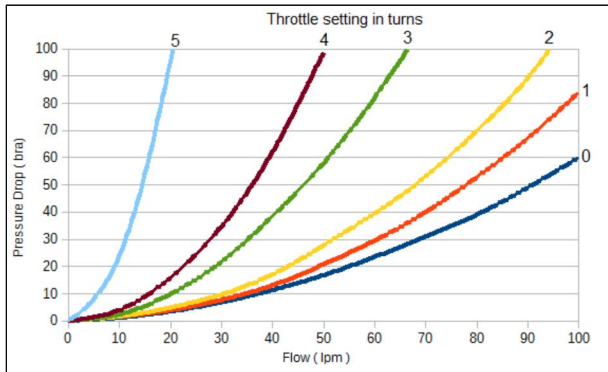


Note :

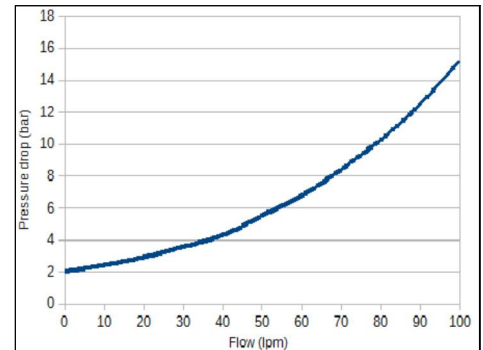
Rotate the valve around horizontal axis 'X' - 'X' by 180° to convert from METER-IN control to METER-OUT control.

Performance Curves

Oil used : VG 46
Test temp: 32°C



Pressure drop related to flow at throttle setting in turns



Pressure drop related to flow across reverse Check valve with throttle fully closed.

Ordering code

