



DIRECT ACTING PRESSURE SEQUENCE VALVE DPS06

ENGINEERING

1

Ref. No. P04505

Release 09/2000

Description

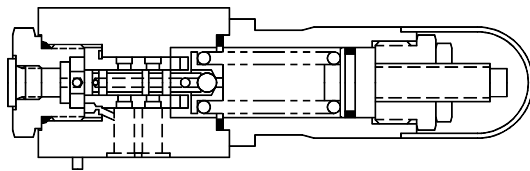
Direct acting spool type pressure sequence valve.

Models available : Internal pilot, internal drain
External pilot, internal drain
Internal pilot, external drain
External pilot, external drain
Port A normally connected to
port T : control at port P
Port A normally connected to
port T : control at port B

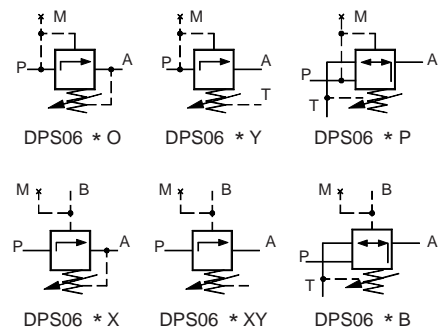
Four pressure ratings 25, 50, 100, or 200 bar.
For reverse free flow, optional check valve can be
supplied as a stackable module.
Pressure adjustment by screw or hand knob.



Section

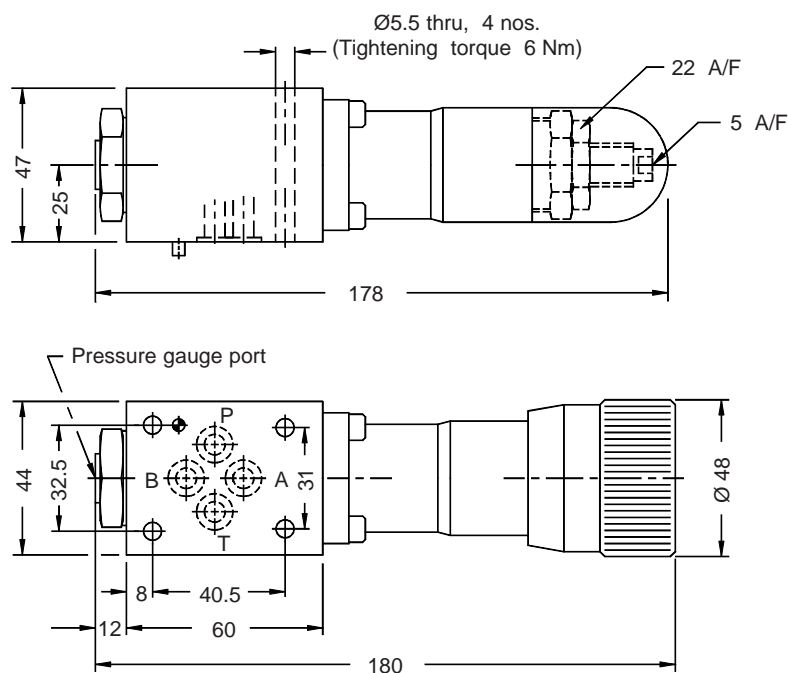


Hydraulic Symbol



Unit Dimensions

Valve



Polyhydron Pvt. Ltd.

78-80, Machhe Industrial Estate,
Machhe, Belgaum-590 014. INDIA.

Phone : +91-(0)831-411001
Fax : +91-(0)831-411002
E-mail : polyhydron@vsnl.com
Website : www.polyhydron.com

P04505



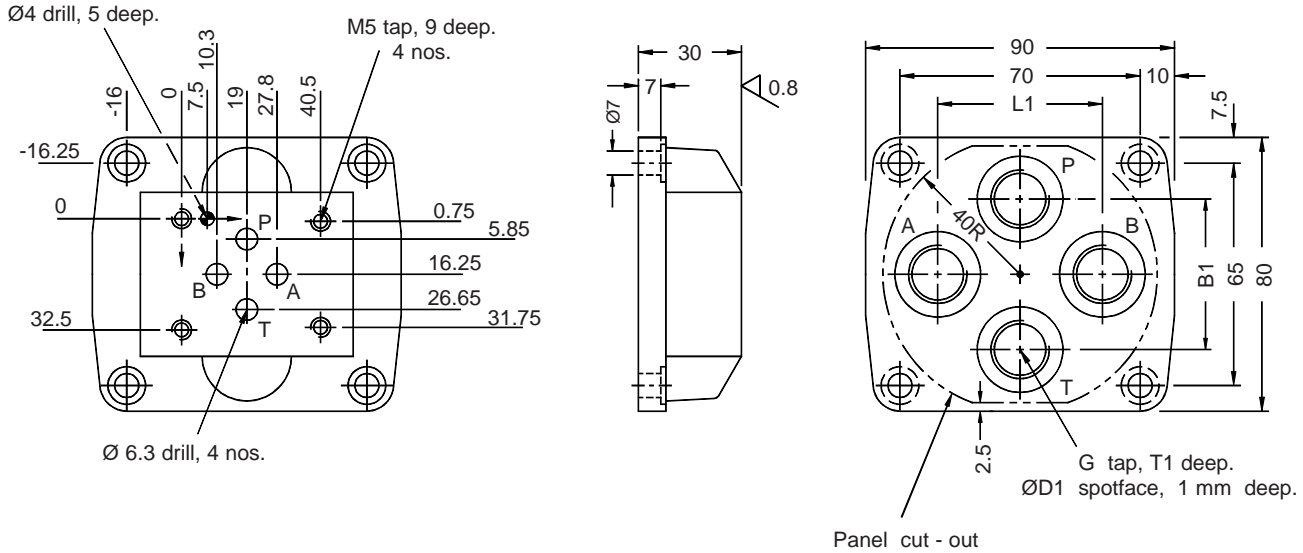
**DIRECT ACTING
PRESSURE SEQUENCE VALVE
DPS06**

ENGINEERING

2

Ref. No. P04505

Subplate



Subplate	B1	$\text{Ø} D1$	G	L1	T1
1SD03G02	34	22	G1/4	36	12
1SD03G03	44	25	G3/8	48	12

Technical Specifications

Construction	Direct acting, spool type.
Mounting	Subplate mounting as per ISO 6403.
Mounting position	Optional.
Flow direction	From port P to A.
Operating pressure	For port P, A and B 315 bar. For port T 60 bar max.
Hydraulic medium	Mineral oil.
Viscosity range	10 cSt to 380 cSt.
Fluid temperature range	-20 °C to +70 °C.
Fluid cleanliness requirement	As per ISO 16/13.
Maximum flow handling capacity	Refer performance curves.
Mass	1.54 kg.



DIRECT ACTING PRESSURE SEQUENCE VALVE DPS06

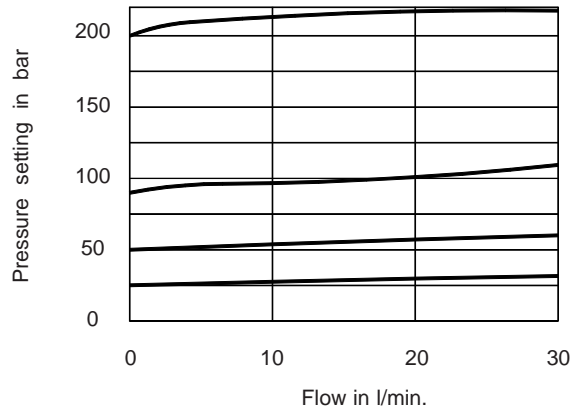
ENGINEERING

3

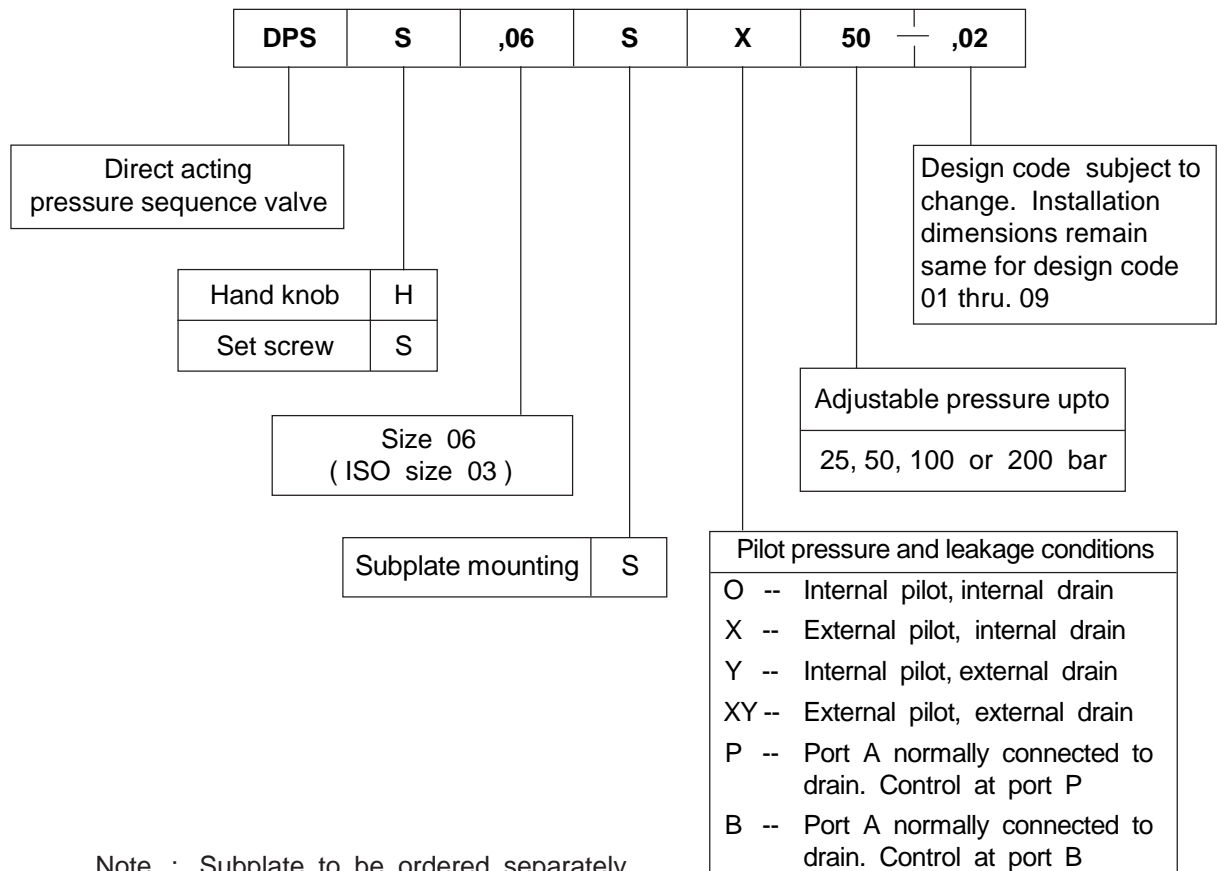
Ref. No. P04505

Performance Curve

Oil used : ISO VG 68, Viscosity : 68 cSt @ 40 °C, Temp. @ test : 52 - 55 °C.



Ordering Code





DIRECT ACTING
PRESSURE SEQUENCE VALVE
DPS06

ENGINEERING

4

Ref. No. P04505

All rights reserved.
Subject to revision.

P04505