



A Polyhydon Group Company

# PRESSURE CONTROL MODULE PCM 06-06

ENGINEERING

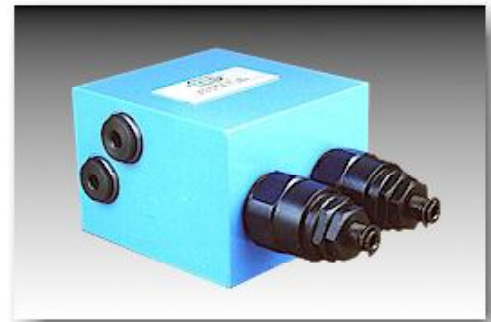
1 of 2

Ref. No. D03645

Release 01 / 2014

## Description

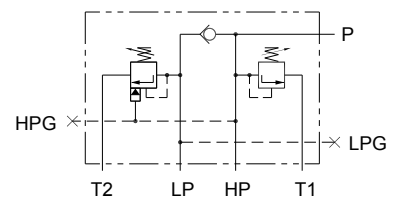
Designed to control double pumps of a Hi-Low system. Unloads low pressure pump when system pressure rises above the pressure set on unloader valve. Relieves high pressure pump when system pressure reaches the value.



### Connection details.

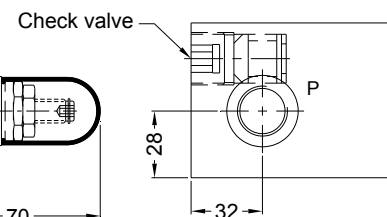
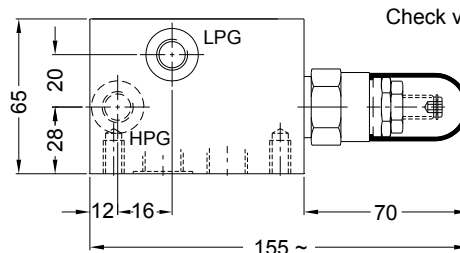
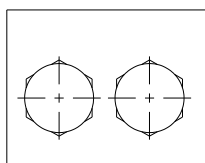
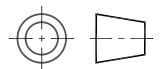
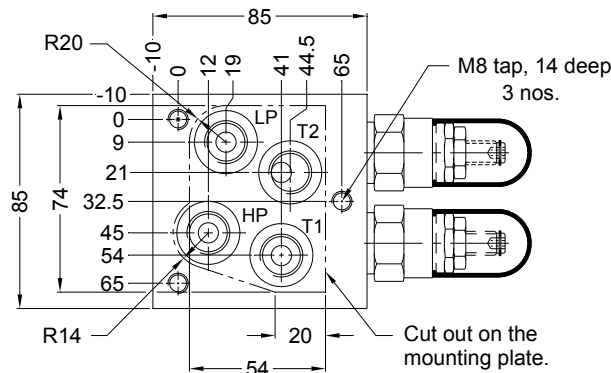
- P ..... Out let connection.
- LPG .... Gauge connection on low pressure pump line.
- HPG .... Gauge connection on high pressure pump line.
- HP ..... High pressure pump connection.
- T1 ..... Tank connection high pressure.
- LP ..... Low pressure pump connection.
- T2 ..... Tank connection low pressure.

### Hydraulic Symbol

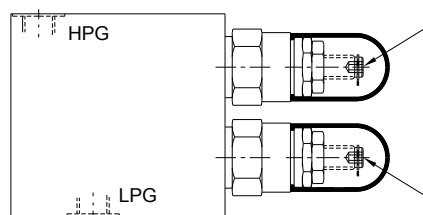


## Unit dimensions

Dimensions in mm.



Port details.	
HP	- G3/8
LP	- G3/8
P	- G1/2
HPG	- G1/4
LPG	- G1/4
T1	- G3/8
T2	- G3/8



High pressure pump relief valve  
Pressure adjusting screw.

Low pressure pump unloader valve  
Pressure adjusting screw.

### Polyhydon Pvt. Ltd.

78-80, Machhe Industrial Estate,  
Machhe, Belgaum - 590 014. INDIA.

Phone : +91-(0)831-2411001  
Fax : +91-(0)831-2411002  
E-mail : polyhydon@gmail.com  
Website : www.polyhydon.com



A Polyhydron Group Company

# PRESSURE CONTROL MODULE PCM 06-06

ENGINEERING

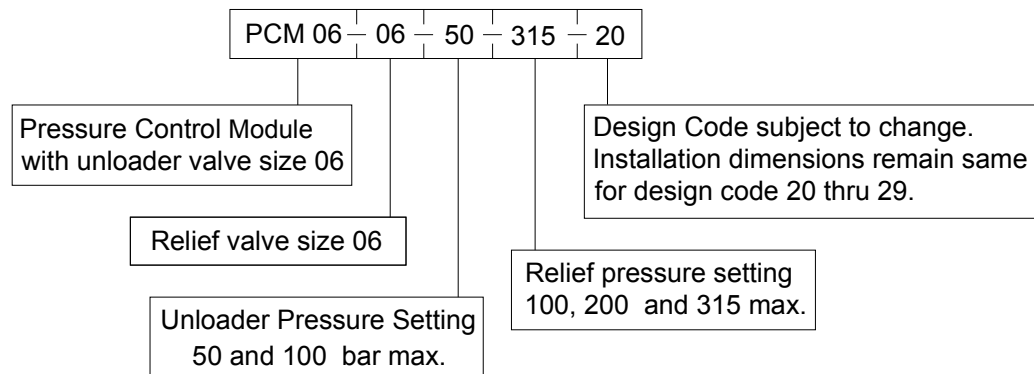
2 of 2

Ref. No. D03645

## Technical specifications

Construction.....	Direct acting poppet type high pr. relief valve. Direct acting spool type low pr. unloading valve.						
Mounting .....	Threaded body ( Factory standard )						
Mounting position .....	Optional						
Direction of flow .....	As per hydraulic symbol.						
Operating pressure .....	For low pr. pump port 100 bar max. For high pr. pump port 100, 200 and 315 bar.						
Hydraulic medium .....	Mineral oil.						
Viscosity range .....	10 cSt to 380 cSt.						
Fluid temperature range .....	-20°C to +70°C.						
Fluid cleanliness requirement .....	ISO 4406 20/18/15 or better.						
Flow handling capacity .....	<table border="1" style="display: inline-table; border-collapse: collapse;"> <thead> <tr> <th style="padding: 2px;">Model</th> <th style="padding: 2px;">High pressure max.</th> <th style="padding: 2px;">Low pressure max.</th> </tr> </thead> <tbody> <tr> <td style="padding: 2px;">PCM 06-06</td> <td style="padding: 2px;">25 l/min.</td> <td style="padding: 2px;">25 l/min</td> </tr> </tbody> </table>	Model	High pressure max.	Low pressure max.	PCM 06-06	25 l/min.	25 l/min
Model	High pressure max.	Low pressure max.					
PCM 06-06	25 l/min.	25 l/min					
Mass .....	1.75 kg APPROX.						

## Ordering code



All rights reserved.  
Subject to revision.