

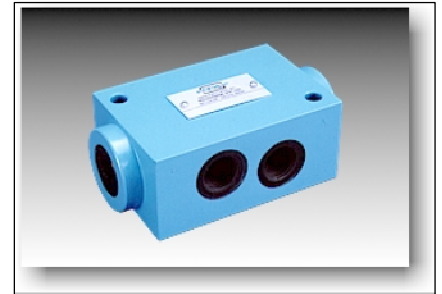


Description

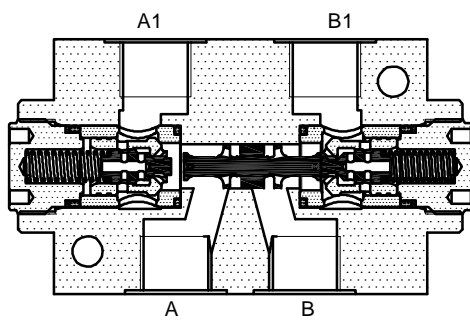
Double pilot operated check valves series 2CI10T** provide pressure holding facility on service ports A1 and B1.

The valve opens and allows free return flow, when the other working port is pressurized.

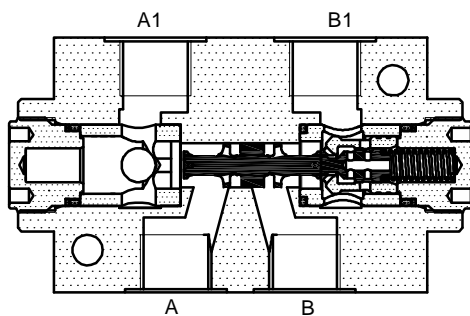
The valve is not suitable for holding pressure on rod end side of Double acting cylinders, where ratio (Bore area : Annullus area) is equal to or greater than 3.5.



Section

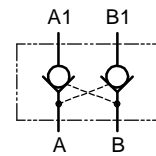


Model : 2CI10TAB

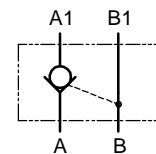


Model : 2CI10TA / B

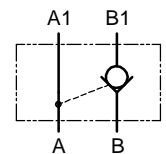
Hydraulic symbol



Model : 2CI10TAB



Model : 2CI10TA



Model : 2CI10TB

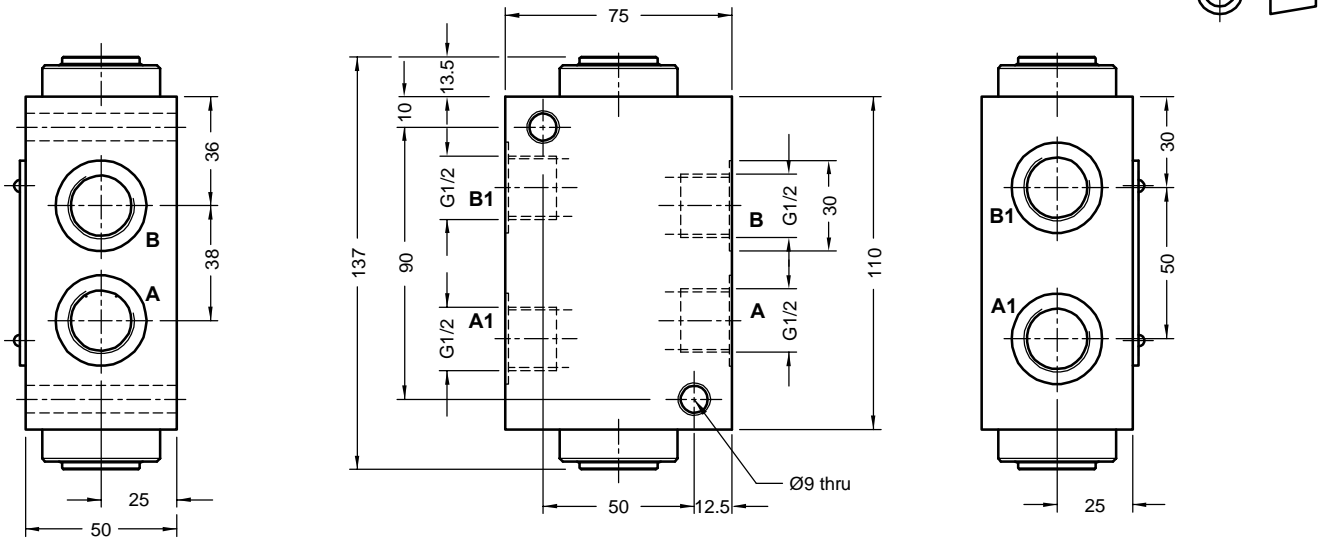
Technical specifications

Construction	:	Threaded, Seat type, Internally pilot operated.
Mounting style	:	Factory standard.
Mounting position	:	Optional.
Flow direction	:	Free flow from A to A1 and / or from B to B1.
	:	Piloted flow in opposite direction.
Cracking pressure	:	1, 3 or 5 bar.
Working pressure	:	315 bar for all Ports.
Area ratios	:	Pilot piston : Decomp. poppet = 3.5 : 1
Hydraulic medium	:	Mineral oil.
Temperature range	:	-20°C to + 80°C.
Viscosity range	:	10 cSt to 380 cSt.
Fluid cleanliness required	:	ISO 4406 20/18/15 or better.
Max. flow handling capacity	:	80 l/min.
Mass approx.	:	2.05 Kg.



Unit dimensions

Dimensions in mm.



Note: Valve fixing S.H.C Screws are not in scope of supply.
Tightening torque for M8x1.25 S.H.C Screws is 39 Nm.

Ordering code

2CI 10 T A 1 22

Double Pilot operated check valve

Size 10

Threaded body **T**

Pilot optd. check facility	
On A & B ports	AB
On 'A' port only	A
On 'B' port only	B

Design code subjected to Change .
installation dimensions remain same for design code 20 thru 29.

Cracking pressure	
1	1.0 bar
3	3.0 bar
5	5.0 bar